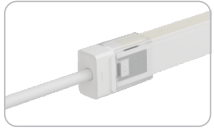
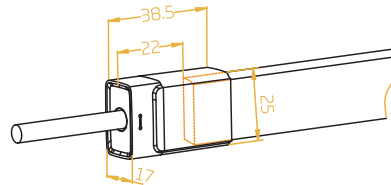


Sleeve Front Connector-End



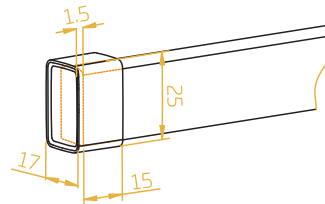
FXN - 1121 - C - SL - FE



Sleeve End Cap



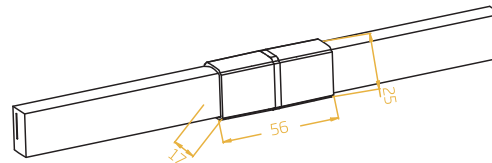
FXN - 1121 - C - SL - EC



Sleeve Middle Connector



FXN - 1121 - C - SL - M

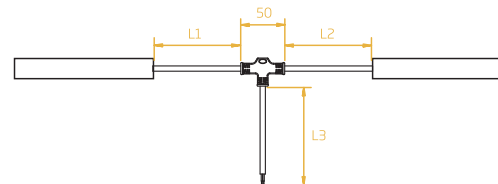


Sleeve Middle Connector & Power T-feed



FXN - 1121 - C - SL - TF

L1 and L2 available in 300mm.
L3 available in 300mm/1000mm/3000mm.



Note:

1. Unless otherwise stated, the tolerance of the connector is $\pm 0.5\text{mm}$;
2. To avoid damage from the excessive force on cable joint, please keep at least 60mm of cable ahead in the natural state.